

RENEWABLE ENERGY PROJECTS PHASE 1A

José Ricardo Nunes
Chief Technical Officer

25/11/2025

**CABO VERDE
AIRPORTS**

POWERED BY **VINCI** 
AIRPORTS

OUR ENVIRONMENTAL AMBITION

Certifications and Accreditations

- ✓ Certification by ISO 14001 Standard – Environmental Management System
- ✓ Achieve different levels of Carbon Accreditation (ACA)
 - Level 1: Carbon emissions mapping, in 2024
 - Level 3: Offsetting residual carbon emissions, by 2028

Energy and Climate Change

- ✓ Reduction in energy consumption
- ✓ 66% reduction in carbon emissions under airport control
- ✓ Net Zero – reduction and offsetting of greenhouse gas emissions

Circular Economy and Waste Management

- ✓ Send zero waste to landfill (until 2030)
- ✓ Reuse of water from wastewater treatment plant (WWTP) and firefighter training sessions

Protection of Natural Resources

- ✓ 50% reduction in water consumption (10.7 IPax)
- ✓ Protection of biodiversity alongside air safety
- ✓ Zero phytosanitary products



OUR ENVIRONMENTAL AMBITION

ENERGY EFFICIENCY



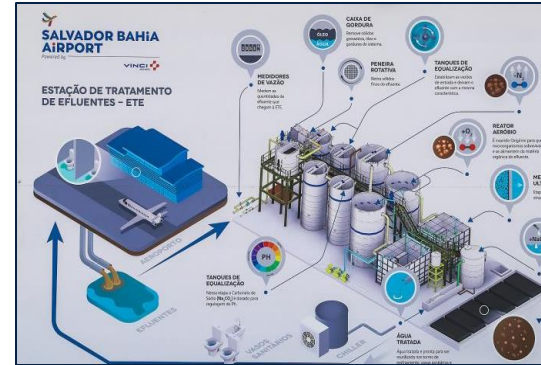
- ✓ Achieve operational energy management through a Building Management System and an Energy Management System.
- ✓ Replacement of existing old equipment: LED, HVAC, etc., as well as on-site renewable energy sources for self-consumption.

RENEWABLE ENERGIES



- ✓ First airport in Cabo Verde to be almost entirely self-sufficient with solar energy and battery storage (55% reduction in scope 1 and 2)
- ✓ Renewable Energy Projects at the 4 international airports

CIRCULAR ECONOMY



- ✓ Water saving devices
- ✓ Water recovery systems
- ✓ Continuous improvement and installation of wastewater treatment plants and improvement of the existing plant in Praia
- ✓ Waste separation facilities and incinerators

LOCAL COMMUNITIES / BIODIVERSITY PROTECTION



- ✓ Biodiversity monitoring and action plans in accordance with IFC performance standards.
- ✓ Stakeholder and community engagement



To achieve our goals...

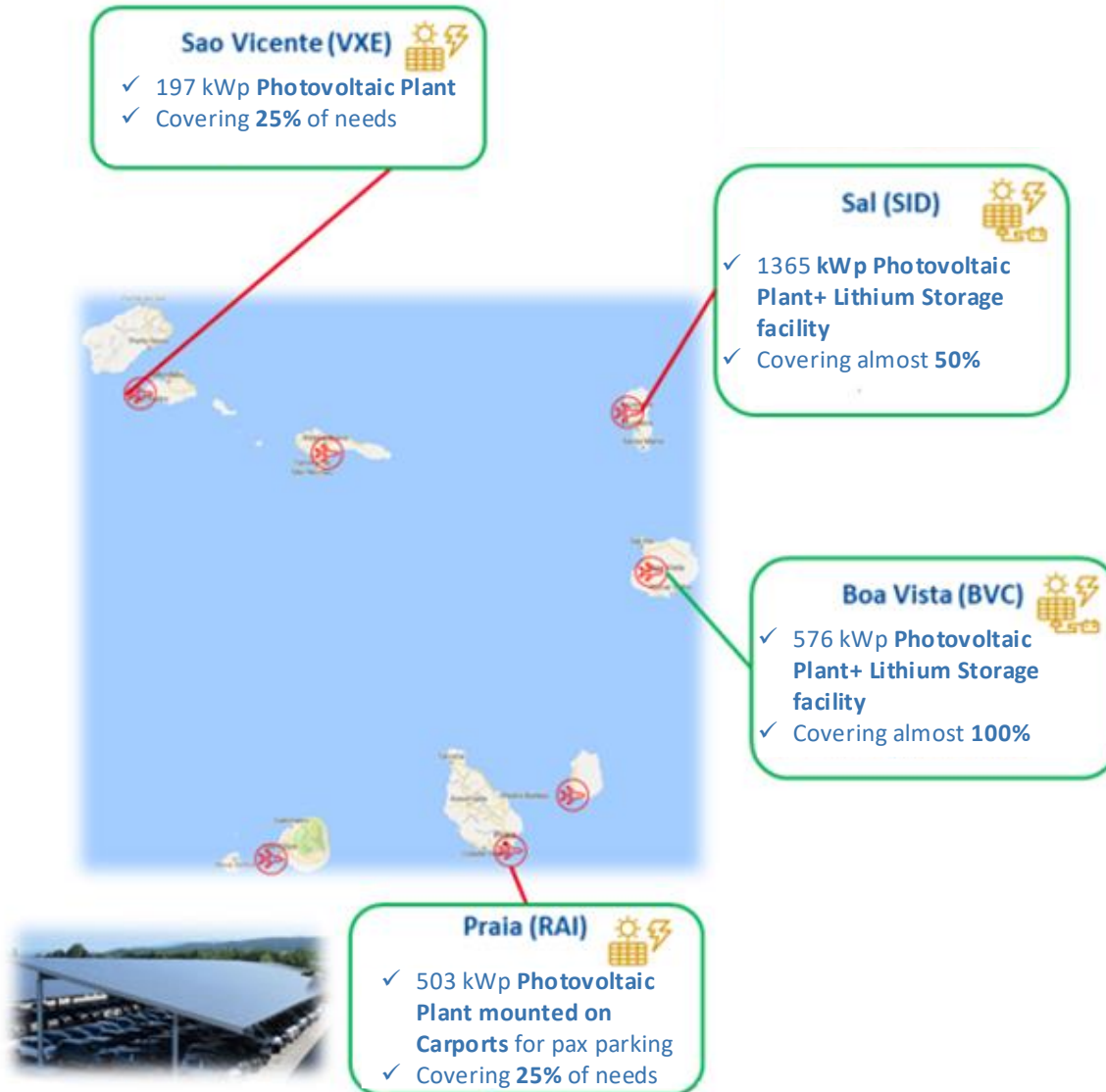


Phase 1A
from the
Concession
commencement
date
2 years

Phase 1B
from 2026 to
2028
3 years



PHASE 1A - RENEWABLE ENERGIES - PROJECTS



ENERGIAS RENOVÁVEIS

4 Renewable Energy Projects – EPC modality

- ✓ 2 Solar Power Plants with BESS
 - SID: Solar Power plant with batteries (approx. 50% of requirements)
 - BVC: Solar Power plant with batteries (approx. 100% of requirements)
- ✓ 2 Solar Power Plants with direct self-consumption
 - RAI: Solar carport (25% of requirements)
 - VXE: Solar park (25% of requirements)



SID FV + BESS



✓ Power Plant Features

- 2220 Mono panels 615 Wp - manufacturer Trina Solar
- 11 x 110 kW inverters - manufacturer HUAWEI
- Ground-mounted structure

✓ BESS

- 6 x HUAWEI LUNA 200 kW cabinets
 - Each cabinet has 12 modules of 16.13 kWh
 - Suitable for outdoor installation
- ✓ Estimated energy production 2.4 GWh with savings of approx. 50%
- ✓ Plant in testing phase
- ✓ Licensing in progress
- ✓ **Expected to start operating in December 2025**



SID FV + BESS



BVC FV + BESS



✓ Power Plant Features

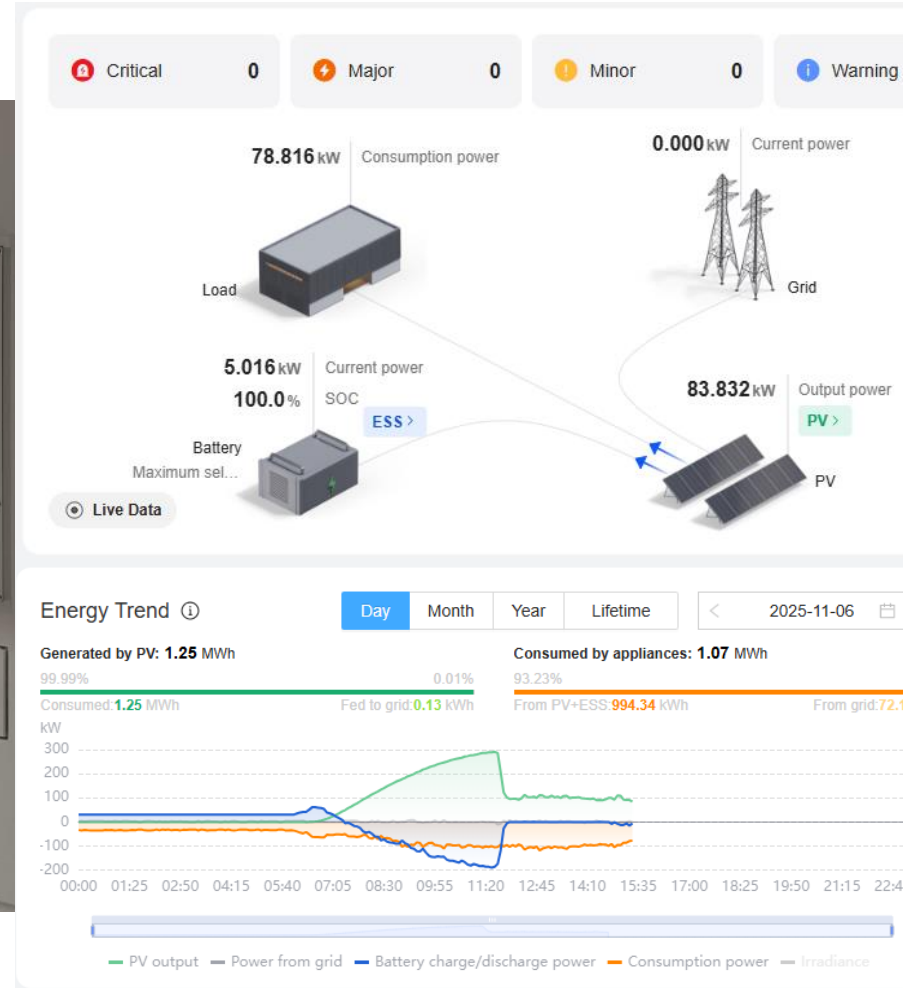
- 576 Mono panels 605 Wp – manufacturer Trina Solar
- 3 x 110 kW inverters – manufacturer HUAWEI
- Ground-mounted structure

✓ BESS

- 6 x HUAWEI LUNA 200 kW Cabinet
 - Each Cabinet has 12 modules of 16.13 kWh
 - Suitable for outdoor installation
- ✓ Estimated energy production 0.5 GWh/year with savings of approx. 100%
- ✓ **Plant currently undergoing testing**



BVC FV + BESS



RAI FV



- ✓ Power Plant Features
 - 832 Mono panels 615 Wp - manufacturer Trina Solar
 - 16 x 30 kW inverters - manufacturer HUAWEI
 - Carport-type structure in parking lot
- ✓ Estimated energy production 0.8 GWh/year with savings of approx. 25%
- ✓ **Operating License issued in February 2025**





🚨 Critical **0**
⚡ Major **0**
⚠️ Minor **0**
🔔 Warning **0**

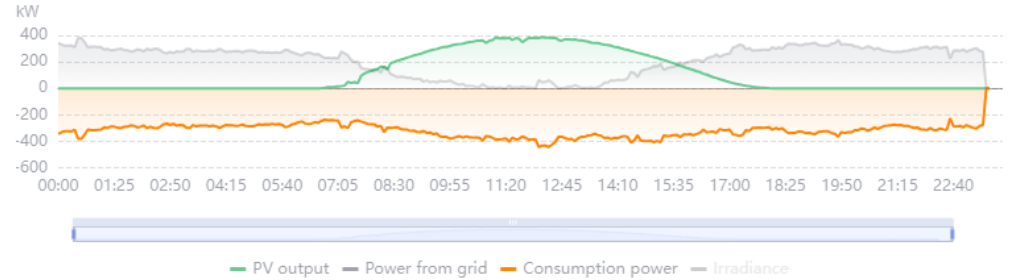


🔄 Live Data

Energy Trend 📄

Day Month Year Lifetime
< 2025-11-07 >

Generated by PV: 2.56 MWh **Consumed by appliances: 7.52 MWh**
 100.00% 0.00%
 Consumed: **2.56 MWh** Fed to grid: **0.05 kWh**
34.13% 65.87%
 From PV: **2.56 MWh** From grid: **4.95 MWh**



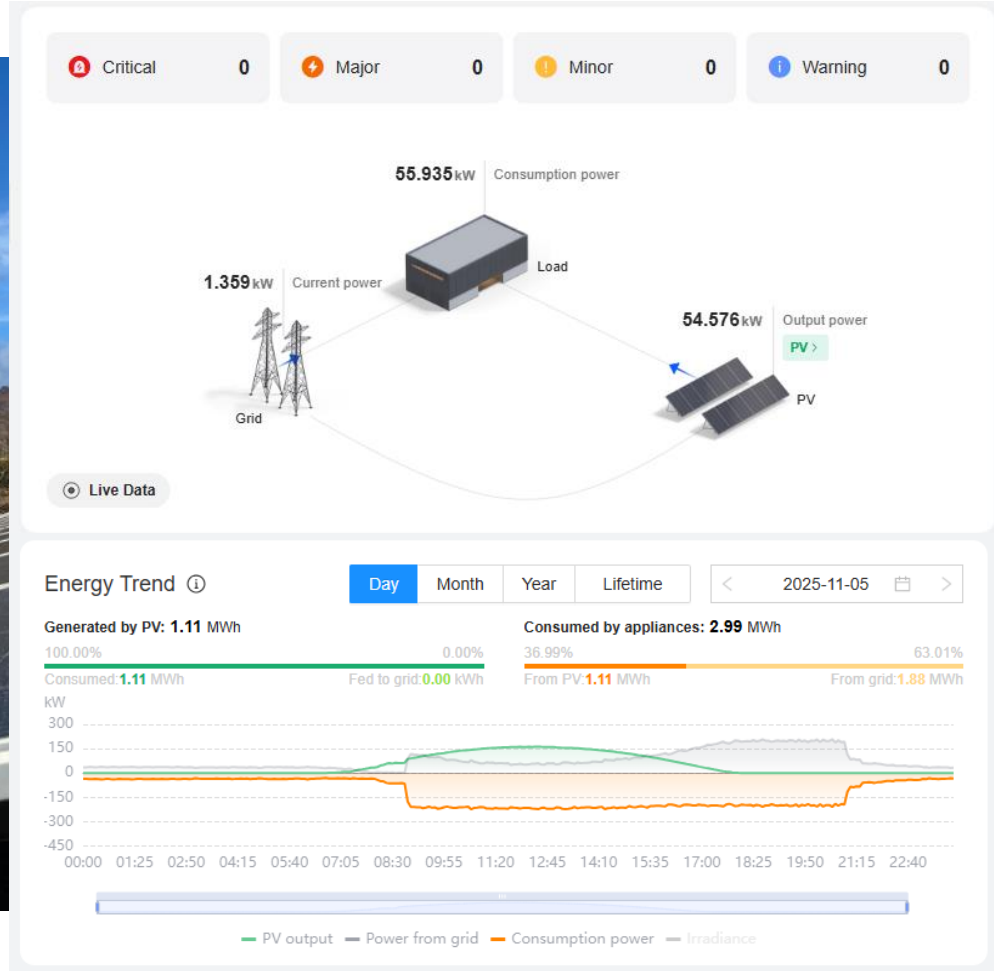
VXE FV



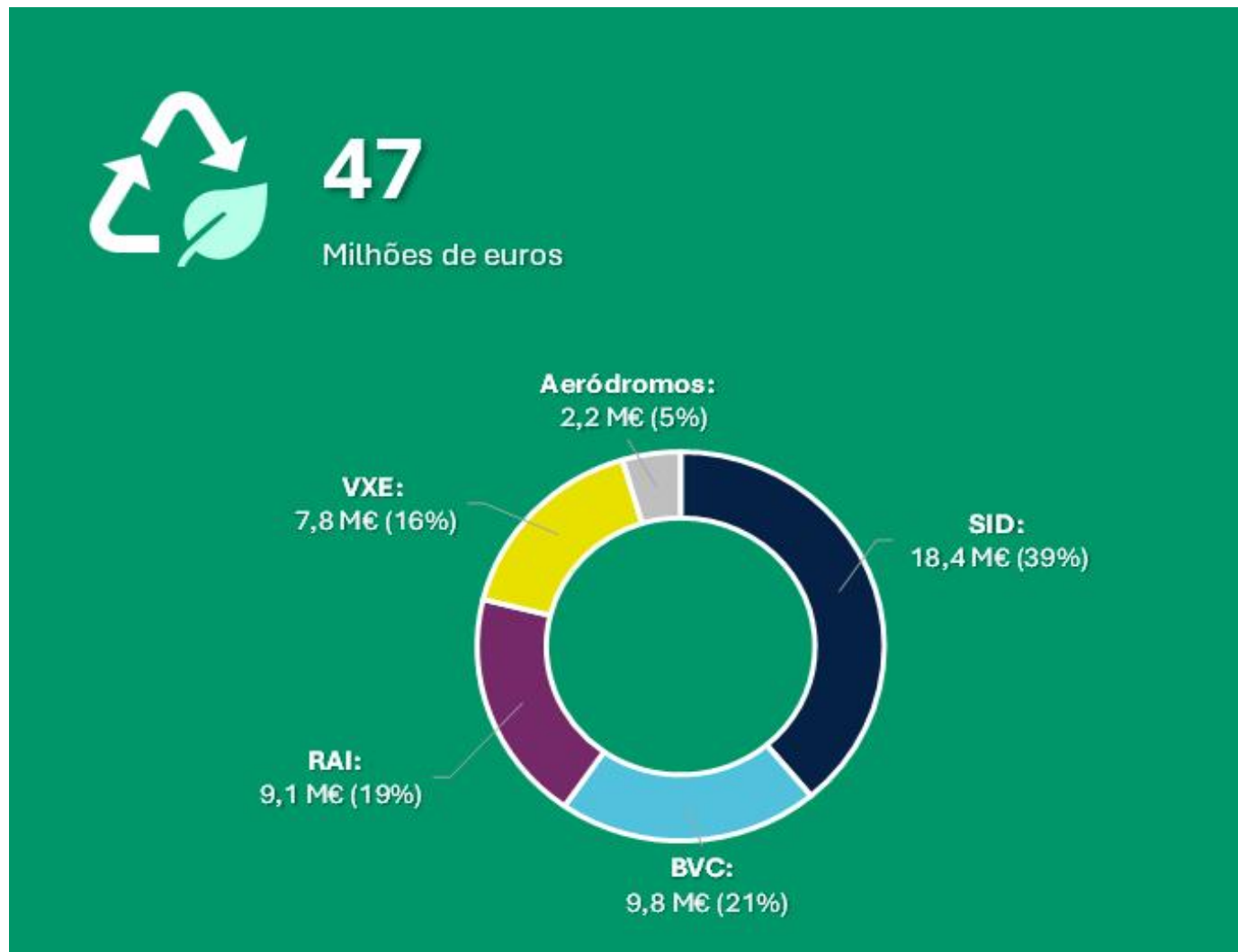
✓ Power Plant Features

- 326 Mono panels 615 Wp - manufacturer Trina Solar
 - 3 x Inverter (100 kW + 2x30 kW) - manufacturer HUAWEI
 - Ground-mounted structure lo
-
- ✓ Estimated energy production: 0.3 GWh/year with savings of approximately 25%
 - ✓ **Operating license issued in April 2025**





PHASE 1 - GLOBAL INVESTMENT - ENVIRONMENT AND ENERGY



CHALLENGES

1

Choice of location within the airport perimeter



2

Approval of the project by the competent authorities



3

Supply Chain Management and Construction in a EPC contract



4

Integration of the power plant into the airport emergency and training plan



5

Maintenance of solar power plants and infrastructure



6

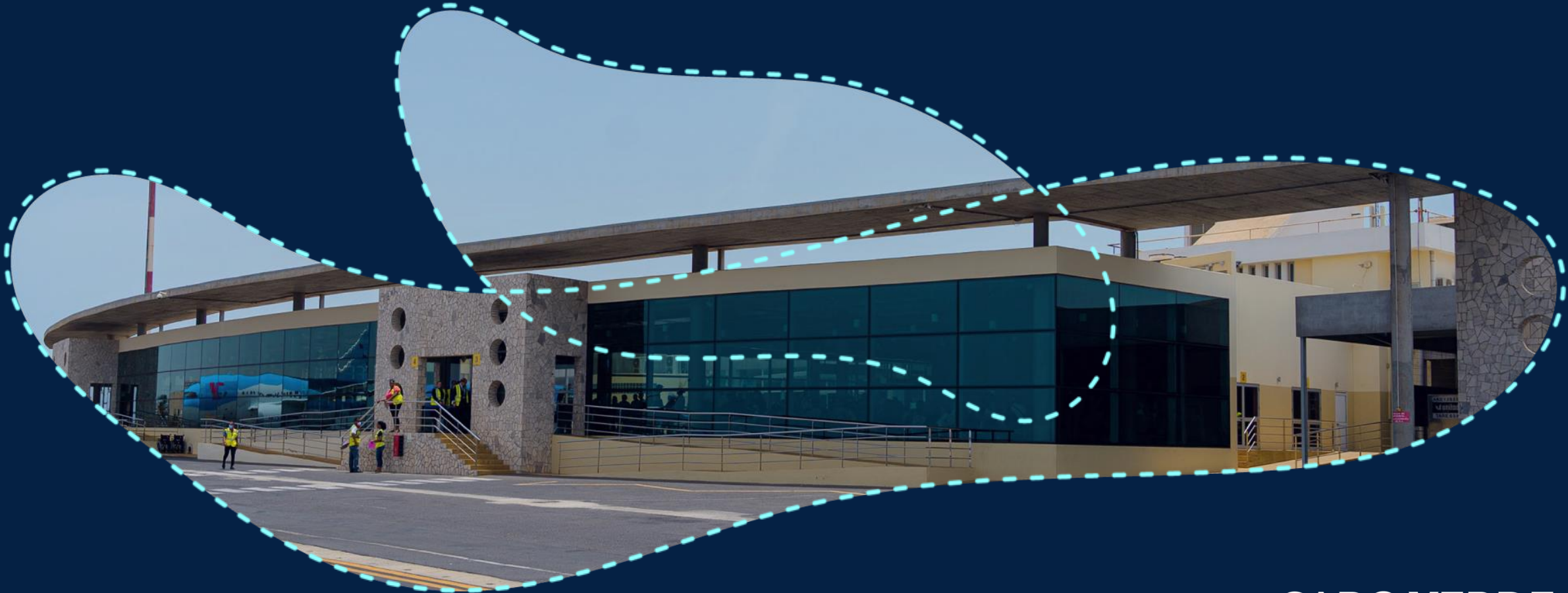
Monitoring and planning for future expansions



Planning and construction phase

Operational phase





THANK YOU FOR YOUR ATTENTION

**CABO VERDE
AIRPORTS**

POWERED BY VINCI AIRPORTS 