



HOSOKAWA ALPINE

Process technologies for tomorrow.

Fine milling of textile waste

Michael Meyerle



Michael Meyerle
Sales Manager – Recycling Technology
Phone: +49 821 5906 661
eMail: m.meyerle@alpine.hosokawa.com



Egoitz Labaca
Sales Manager – Spain & Portugal
Phone: +34 626 947 715
eMail: e.labaca@alpine.hosokawa.com



HOSOKAWA ALPINE

Process technologies for tomorrow.

» AGENDA

1. Who are we...?

- 1.1 Company profile

2. What can we do...?

- 2.2 Machine portfolio
- 2.3 Typical applications

3. What does this has to do with textiles...?

- 3.1 Optimize existing design
- 3.2 Latest results

WHO WE ARE...

»» FACTS HOSOKAWA ALPINE



1898 founding of the Otto Holzhäuer'sche Maschinenfabrik in Augsburg



10 subsidiaries worldwide
(3x Germany, India, MENA, Poland, Russia, Spain, Switzerland, USA)



850 employees
in Augsburg and Leingarten
(as of September 30th, 2020)



Takeover by the **Hosokawa Micron Corporation**, Japan 1987



Strong international orientation with approx. **79 % export quota**



Revenue FY 2023
252 Mio. €*

■ Powder & Particle Processing
■ Film Extrusion

* preliminary figures

ALPINE AS PART OF HOSOKAWA MICRON GROUP

Manufacturing sites

Hosokawa Alpine American Inc.
Northborough, MA, USA

Hosokawa Micron Powder Systems
Summit, NJ, USA

Serviços Avançados de
Processamento de Sólidos Ltda.
(Joint Venture) São Paulo, Brazil

Hosokawa Micron Ltd.
Runcorn, United Kingdom

Hosokawa Alpine Aktiengesellschaft
Augsburg, Germany

Hosokawa Solids Solutions GmbH
Landsberg am Lech, Germany
Zarautz, Spain

Hosokawa Micron Powders GmbH
Cologne, Germany

Hosokawa KOLB GmbH
Niederkassel, Germany

Hosokawa Micron B.V.
Doetinchem, Netherlands



Sales and service offices

Hosokawa Micron France

Hosokawa Micron St. Petersburg OOO

Hosokawa de Mexico S.A. de C.V.

Hosokawa Micron Shanghai

Hosokawa Micron Korea

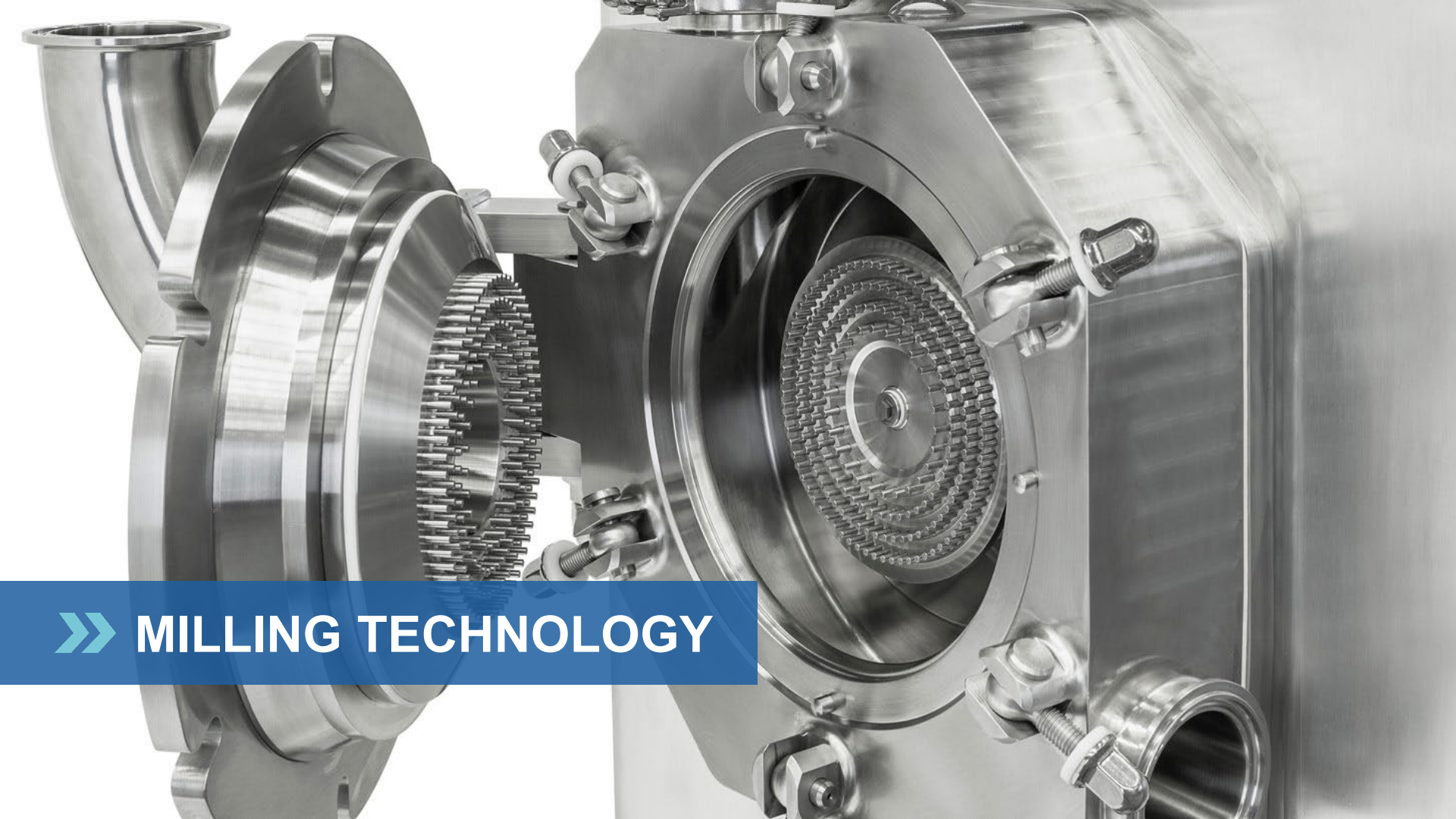
Hosokawa Micron Malaysia

Hosokawa Micron India

Hosokawa Alpine Poland

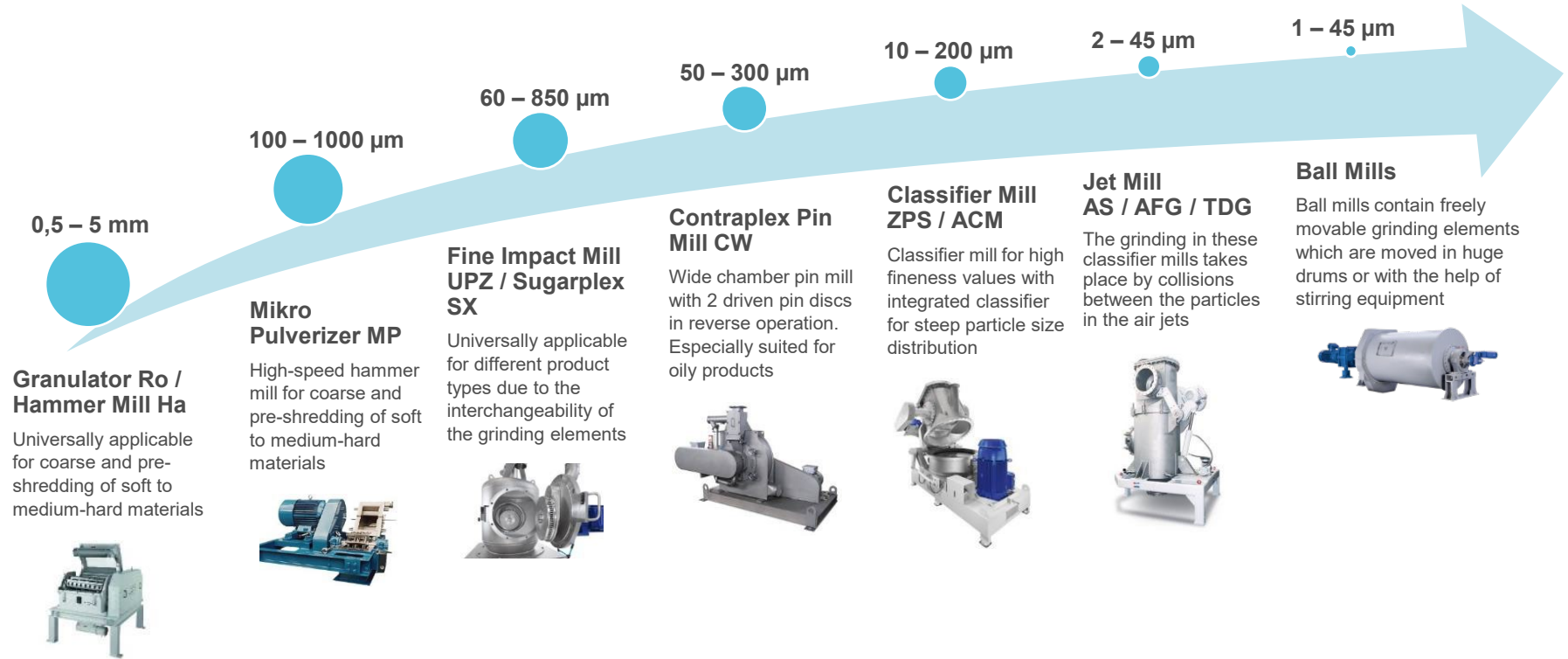
1916 founding of
Hosokawa Micron Corporation
in Osaka, Japan

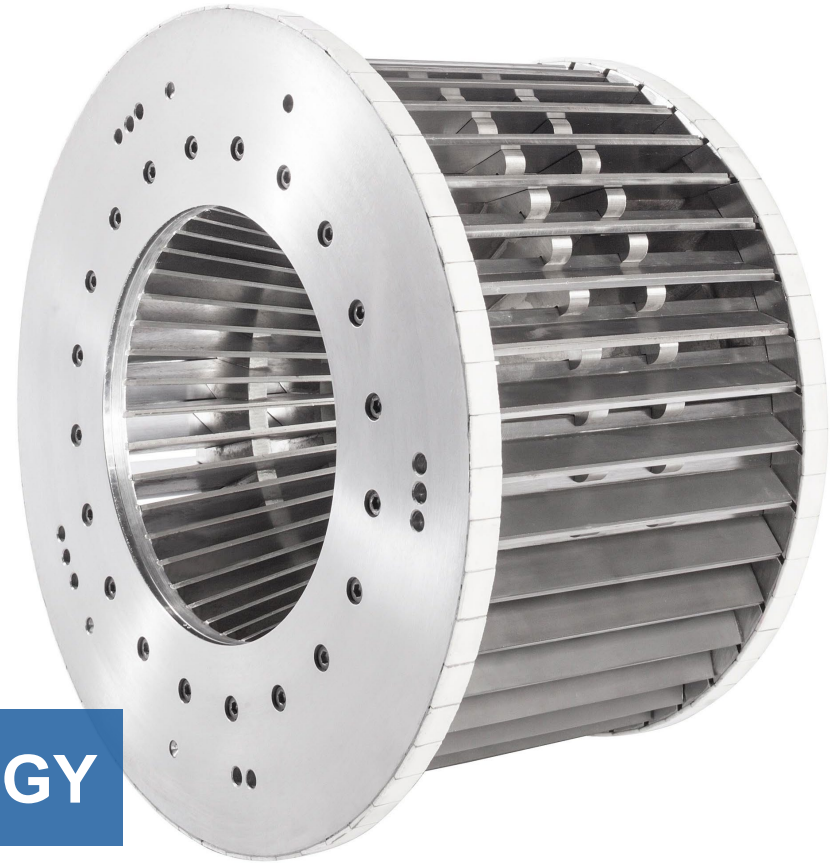
WHAT WE CAN DO...



» MILLING TECHNOLOGY

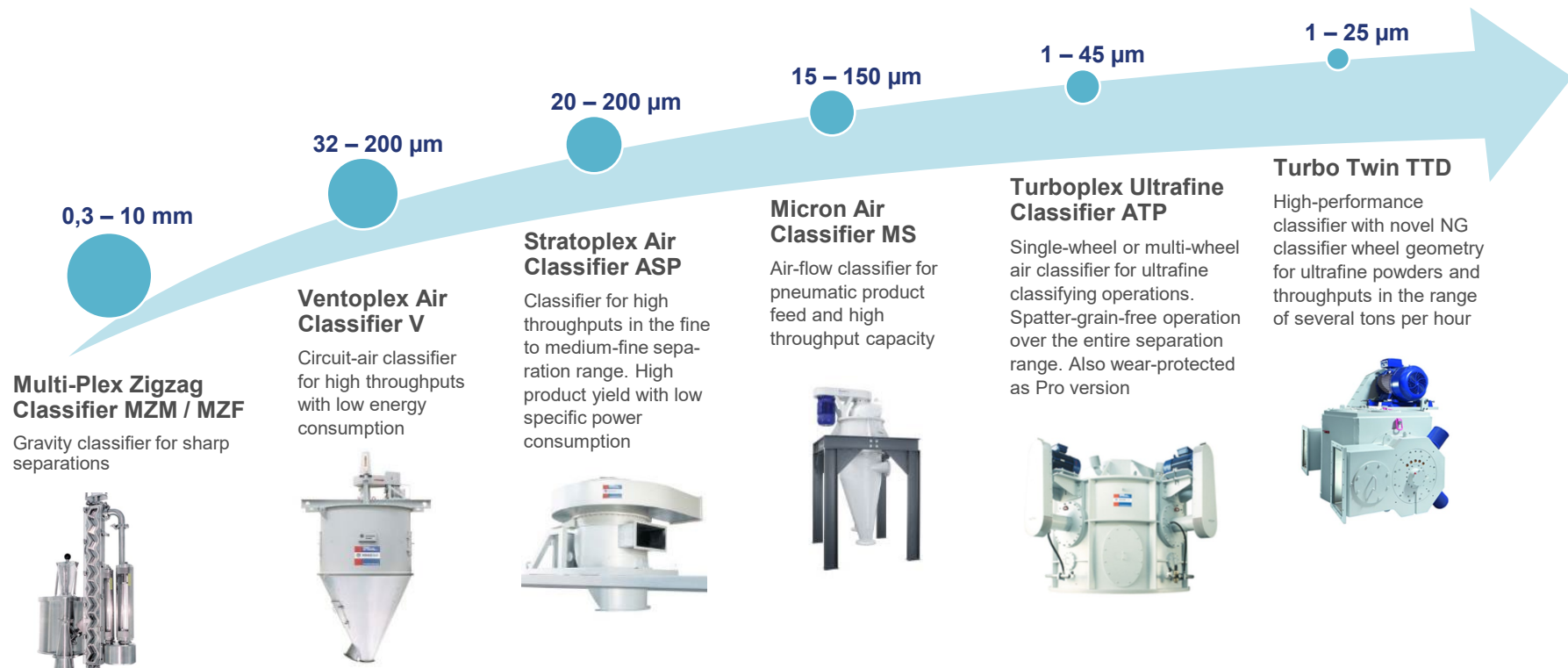
MILLING TECHNOLOGY

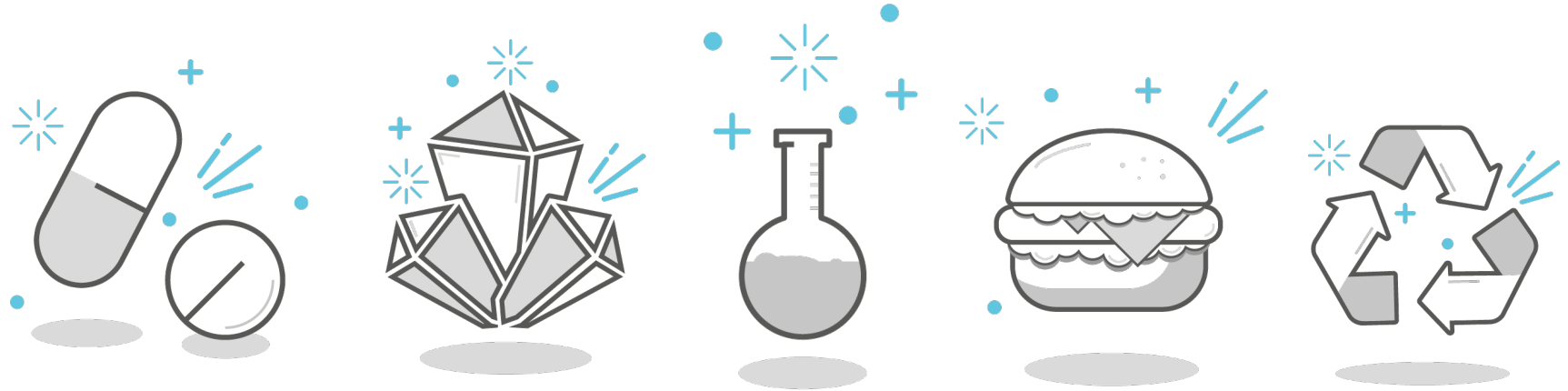




» CLASSIFIER TECHNOLOGY

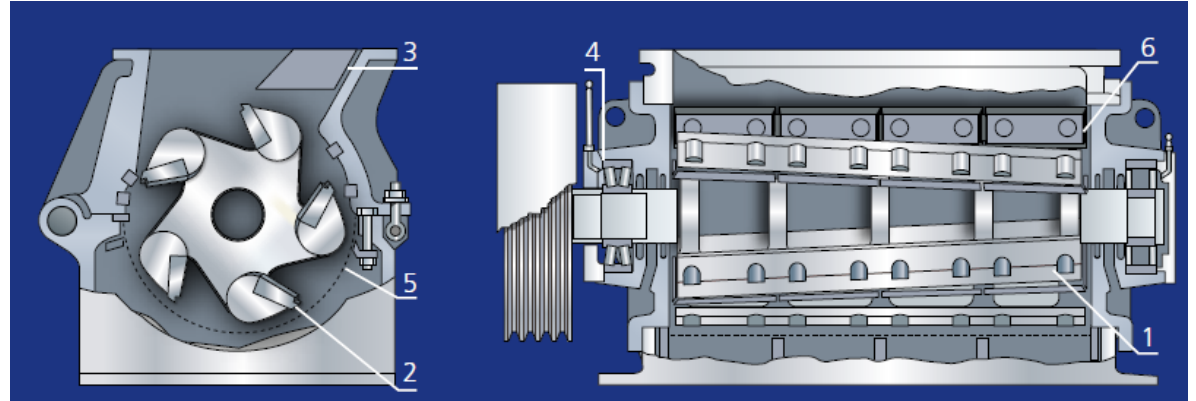
» CLASSIFIER TECHNOLOGY





»» TYPICAL APPLICATIONS

» ROTOPLEX – OUR ROBUST ALLROUNDER



Cutting like with a pair of scissors.

Stable process due to self cooling rotor design

WHAT THIS HAS TO DO WITH TEXTILES...

» FIBRE MILL – OPTIMIZED ROTORDESIGN

Established stability and narrow cutting gap



More knives for higher throughput



50% higher throughput

» LATEST RESULTS

Leistungen – Fibre mill

Maschine	Power	Throughput
40/63 Ro HS	45 kW	175 kg/h
50/63 Ro HS	55 kW	250 kg/h
50/100 Ro HS	90 kW	400 kg/h

Throughput was measured with a 2mm screen.

Produktqualität – ASP II Classifier



THANKS FOR YOUR ATTENTION !



Michael Meyerle
Sales Manager – Recycling Technology
Phone: +49 821 5906 661
eMail: m.meyerle@alpine.hosokawa.com



Egoitz Labaca
Sales Manager – Spain & Portugal
Phone: +34 626 947 715
eMail: e.labaca@alpine.hosokawa.com

QUESTIONS ?

→ PLEASE CONTACT US !